

Photo Journal

Timber Measurements Society Meeting, Tacoma Washington, 6-8 April 2011

(with some pictures from the Intermountain Chapter/Hoohoo club scaling school on 14-15 April)





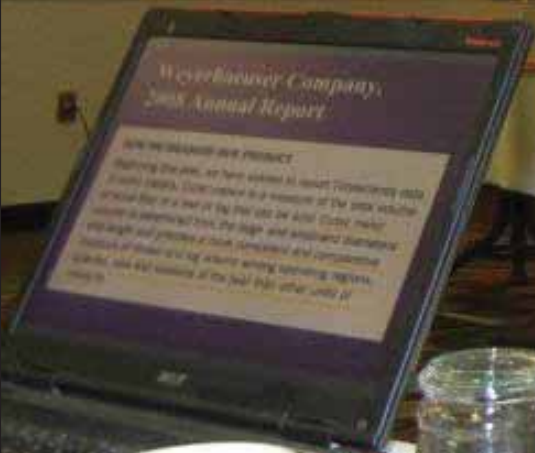
Just before the start of the meeting on April 6

Weyerhaeuser Company, 2008 Annual Report

HOW WE MEASURE OUR PRODUCT

Beginning this year, we have started to report Timberland in cubic meters. Cubic meters is a measure of the total volume of wood fiber in a tree or log that can be sold. Cubic meter volume is determined from the large- and small-end diameter and length and provides a more consistent and comparable measure of timber and log volume among operating regions, species, size and seasons of the year than other units of measure.

Neal Hart on
transacting logs by
weight and cubic



Pete Van Sickle on the Idaho Department of Lands program of selling timber by weight

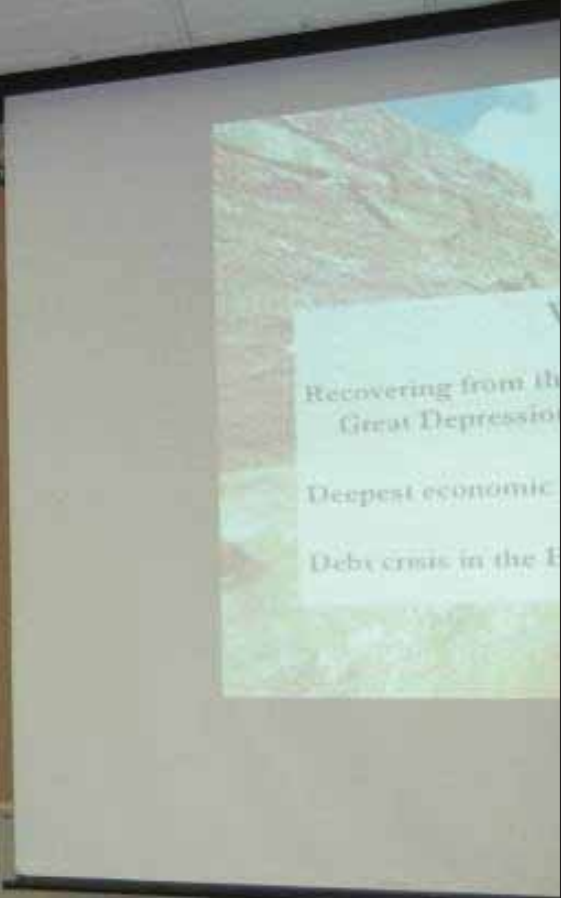
IDL Future Ton Sale

- Add Delivered Product Sales
- Add 5' 12" diameter volume
- Add specific Areas
- Gradually increase the amount volume
- Reach 80% ton sale by volume
- Continue collection of weight
- Continue to scale 24" + logs

**Bill McFarling, on
Neiman Timber's
program of buying logs
on a weight basis**



**Delton Alderman
explaining the current
and forecasted market
for forest products**



Tom McKenzie on quality standards of poles as they relate to grading and scaling (BC and Scribner)

70 Foot pole t
perfect
Straight with
taper and no c



John Aschenbach on suggestions for cruising high valued timber stands

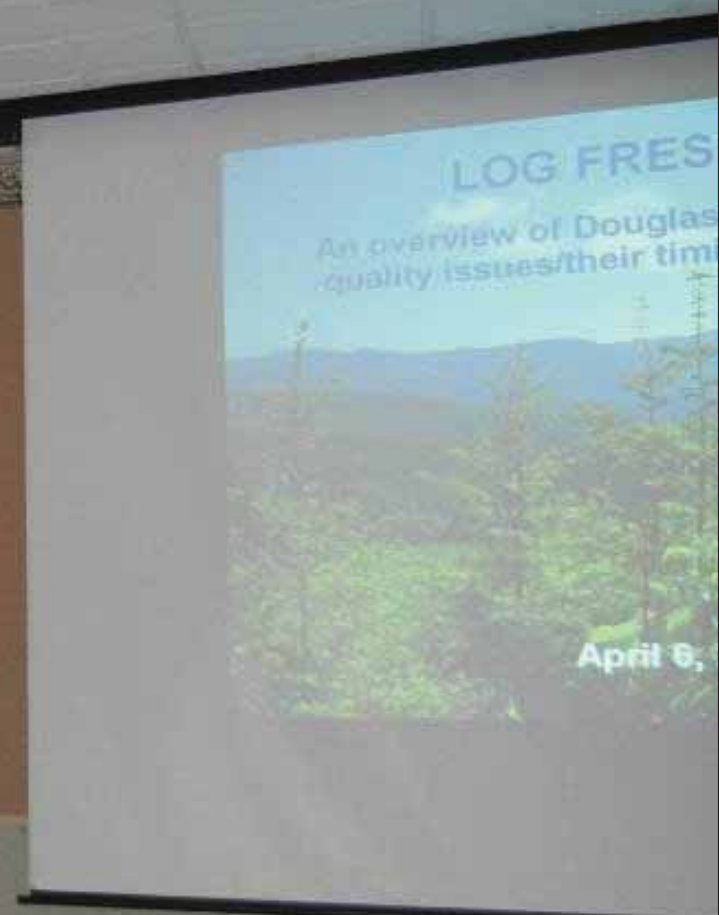
Proposed
The proposed action is to cruise high valued timber stands in the...
The purpose of this cruise is to determine the...
The results of this cruise will be used to...
The estimated cost of this cruise is...

AV equipment on a table, including a projector and a laptop.

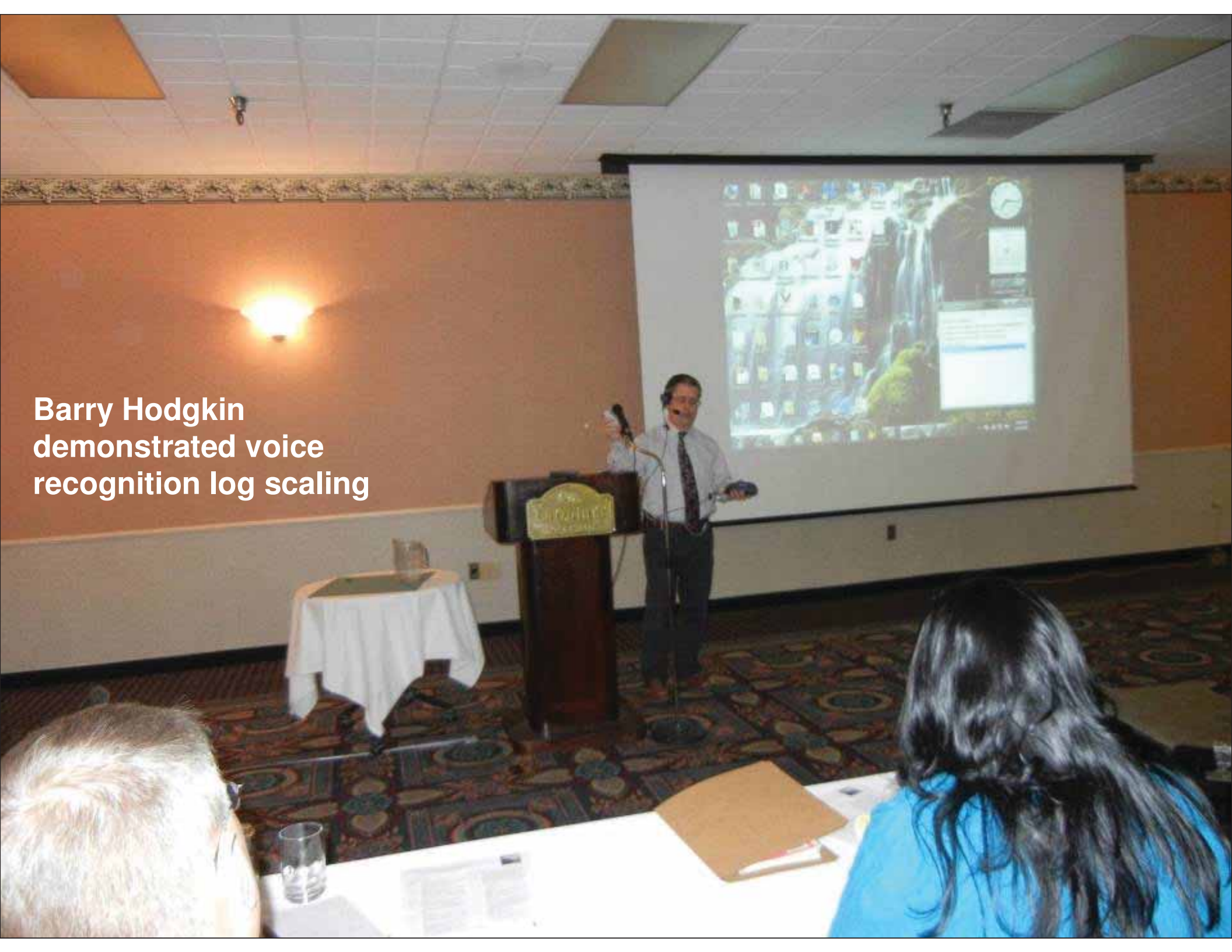
Peter Dyson presents the results of study done on Vancouver Island on simple sampling for log scaling



**Don Gsell shared
experience on recognition
and prevention of
freshness related log
degradation**



**Barry Hodgkin
demonstrated voice
recognition log scaling**



Hal Wilkins presented log scaling methods and timber overview from the New England region and shared some of his experiences in working with measurement systems in the timber exporting business



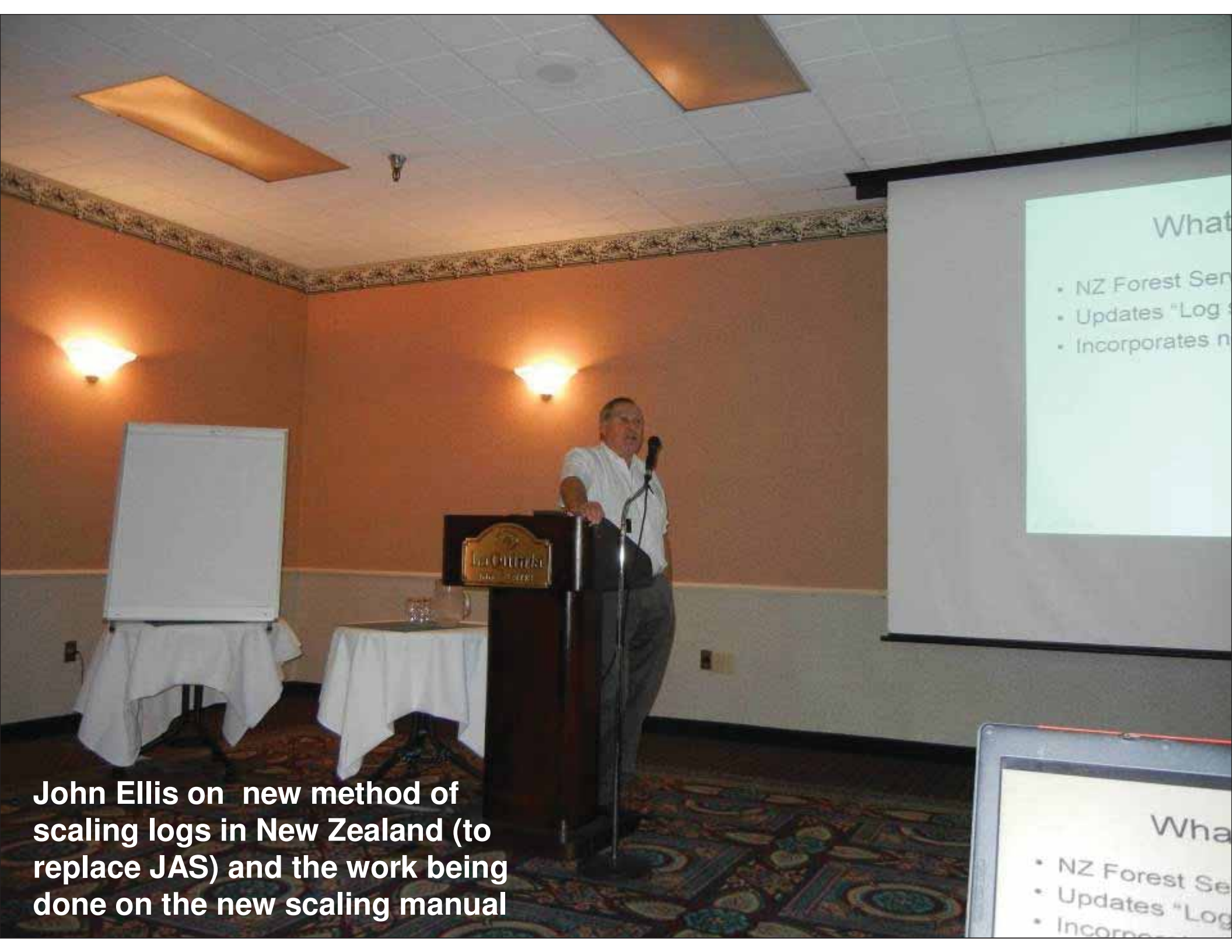
**Jason Martin on
assessing stockpile
volumes**



Well-bu

- Records azim
- point, genera
- High Repeat
- Store thousa
- Error-free el





John Ellis on new method of scaling logs in New Zealand (to replace JAS) and the work being done on the new scaling manual

What

- NZ Forest Ser
- Updates "Log
- Incorporates n

What

- NZ Forest Ser
- Updates "Log
- Incorporates

Roy Anderson on the difficulties and approaches of assessing the availability and volume of bark for the wood energy sector

The E

- Planning, consi
services for the
- 5 consultants o
- Sawmill plannin
 - Collins Con
Boardman,
 - Capital imp
- More than 30 N
studies compl
 - Softwood a
(various sp
 - Particlebo
 - OSB and P

The Bark Group, Portland, OR

The B



Glen Murphy on terrestrial LIDAR and the results of recent trials conducted

Estimating stand value yields using scanning and

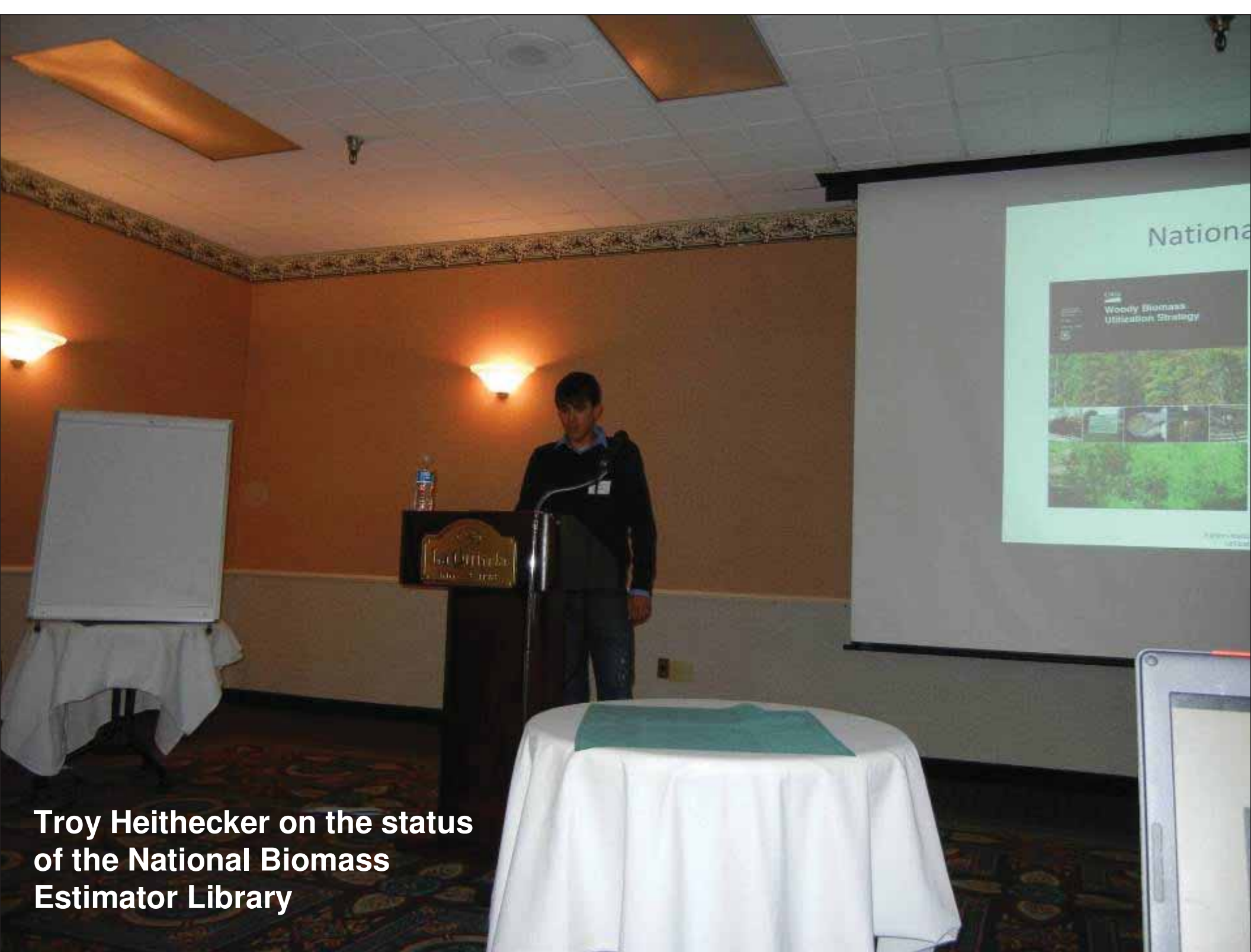


Glen Murphy
Oregon
Bru
Green

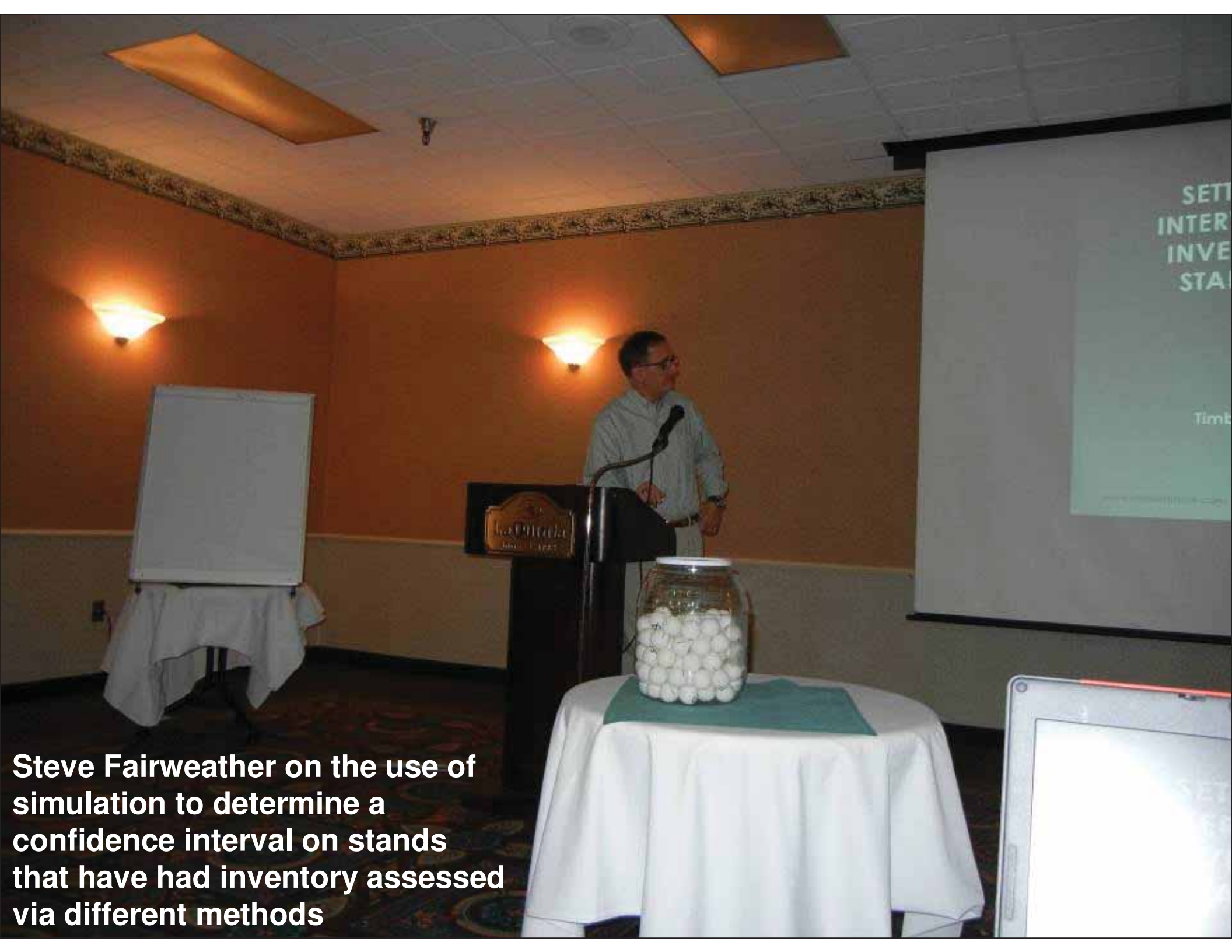
Timber Measurement S

Murray Hall presented his experience with reviewing sampling procedures to determine bone dry weight of wood fibre





Troy Heithecker on the status of the National Biomass Estimator Library

A man in a light blue shirt and glasses stands at a dark wood podium with a microphone. In the foreground, a glass jar filled with white balls sits on a white-clothed table. To the left is a whiteboard on a stand. To the right, a projector screen displays text. The room has orange walls and recessed ceiling lights.

Steve Fairweather on the use of simulation to determine a confidence interval on stands that have had inventory assessed via different methods

SETT
INTER
INVE
STAI

Time

Original Goals

1. Improve the Physical Log Accountant
2. Take More Measurements
3. Devise a Procedure that and Replicate.
4. Devise a Procedure that Accountants and Audi

John Calkins on methods and new technology for deck measurements used in a log yard inventory

Ernie Bauer presented some of the different approaches for utilization and scaling dead lodgepole pine



Lodgepole

When MPBs a



Mario Angel on drive-through log scanning in North America

Who We Are:



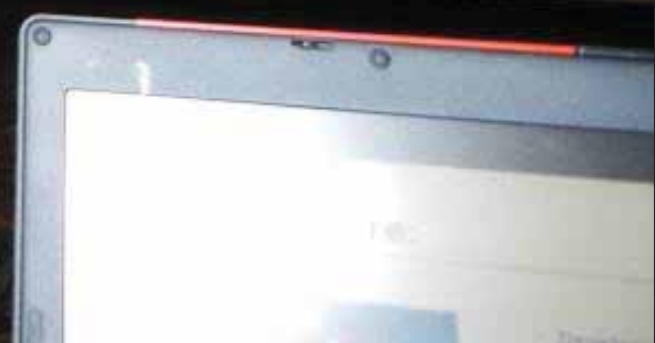
- Developed technology to scan and dimension logs of wood
- Associated with the largest group of Latin America (5 million/year)

MEASUREMENT SOLUTIONS



Objective
To become the world's largest log volume measurement company

www.woodscan.com





Russ Carrier on standardized butt-cut taper rates for log scaling and their effects in the eastern part of Washington

Field trip to Simpson Tacoma. What a nice day



John Calkins did a great job of organizing the log roll-out and mill tours



The logs were all numbered and had the lengths written on them in metric and imperial units.



John Calkins gave everyone printouts with the log volumes using long-log Scribner, the NWLRAG cubic and B.C. firmwood. Most could compare the numbers that they determined with John's figures





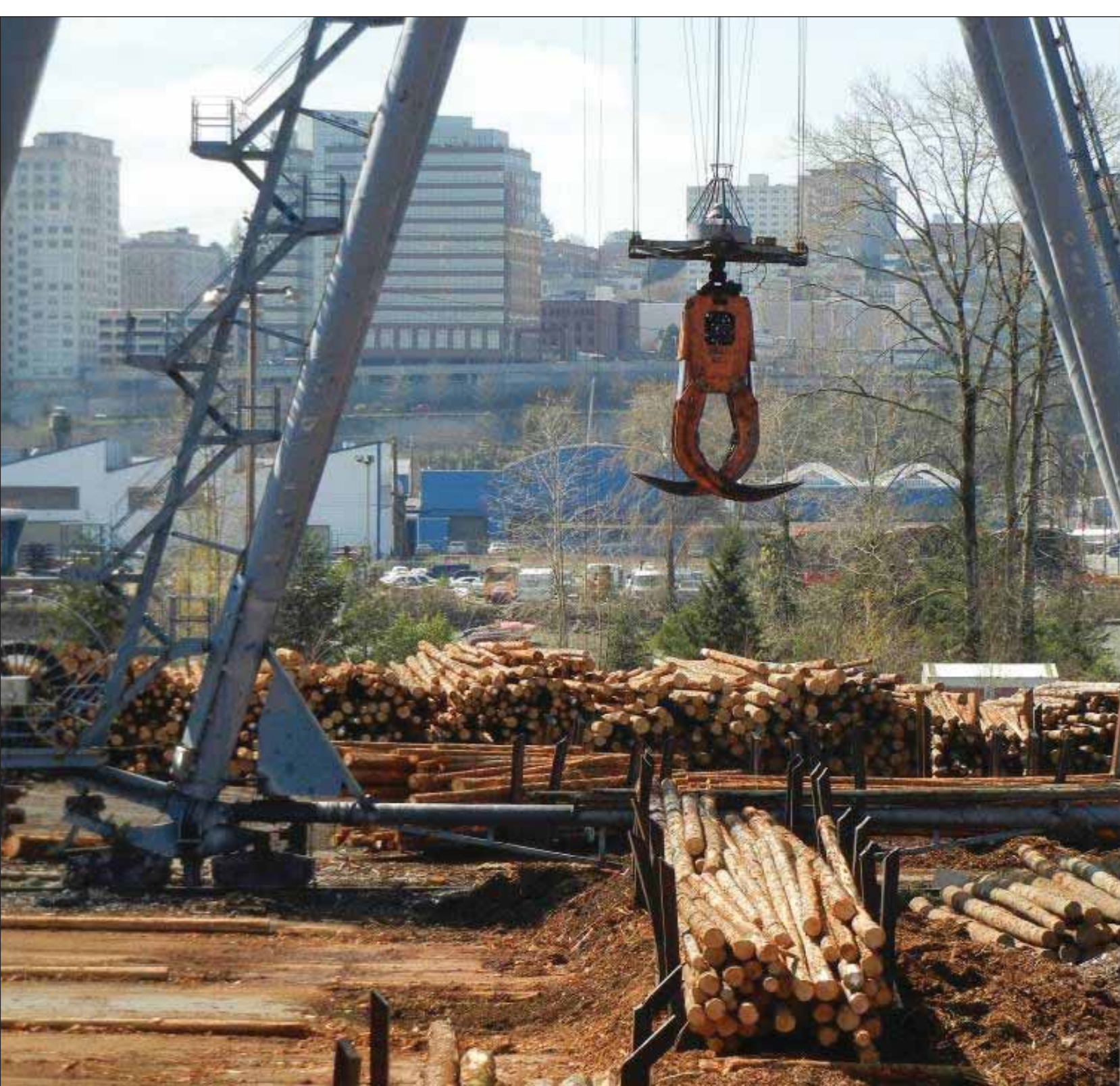


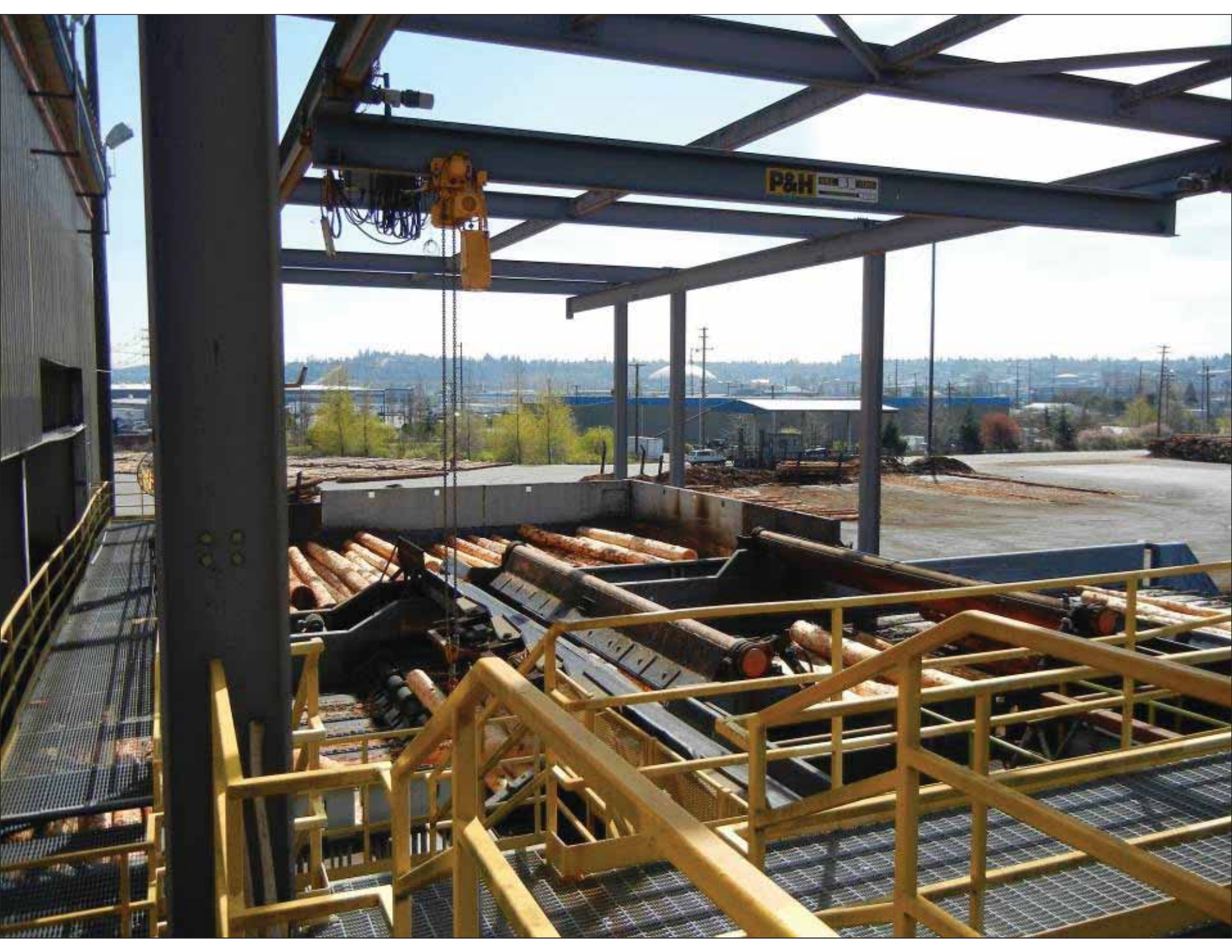
Terry Pelt with some background information on the Simpson Tacoma sawmill and information on SFI



Logs are decked with a crane and are quite tall







P&H





ion®

pany



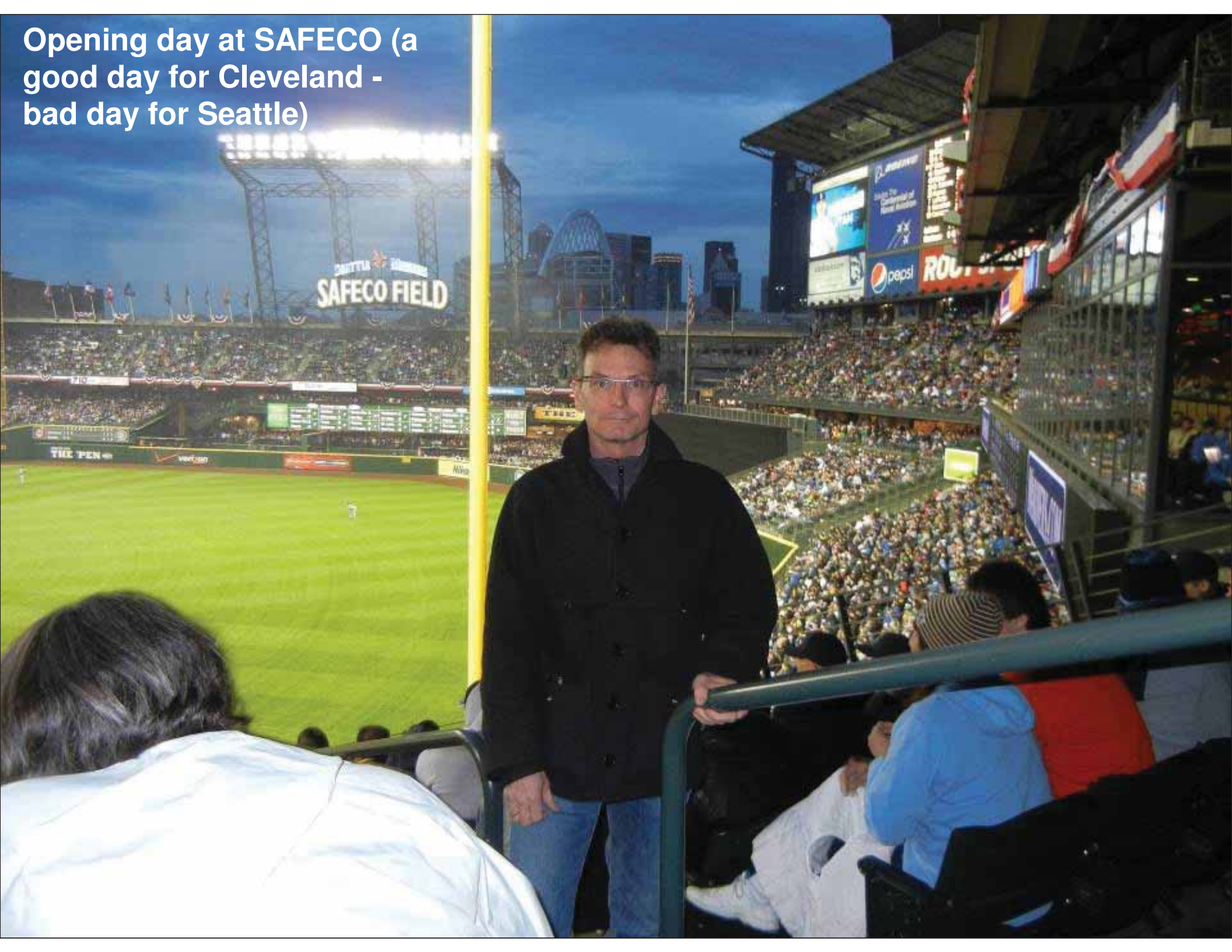
**Proudly
Made in the USA**

1051





Opening day at SAFECO (a good day for Cleveland - bad day for Seattle)





Hyak Washington, just east of Seattle at 3,000 ft elevation (900 m) and 16' (5m) of snow in mid April (Spring is way behind schedule this year)



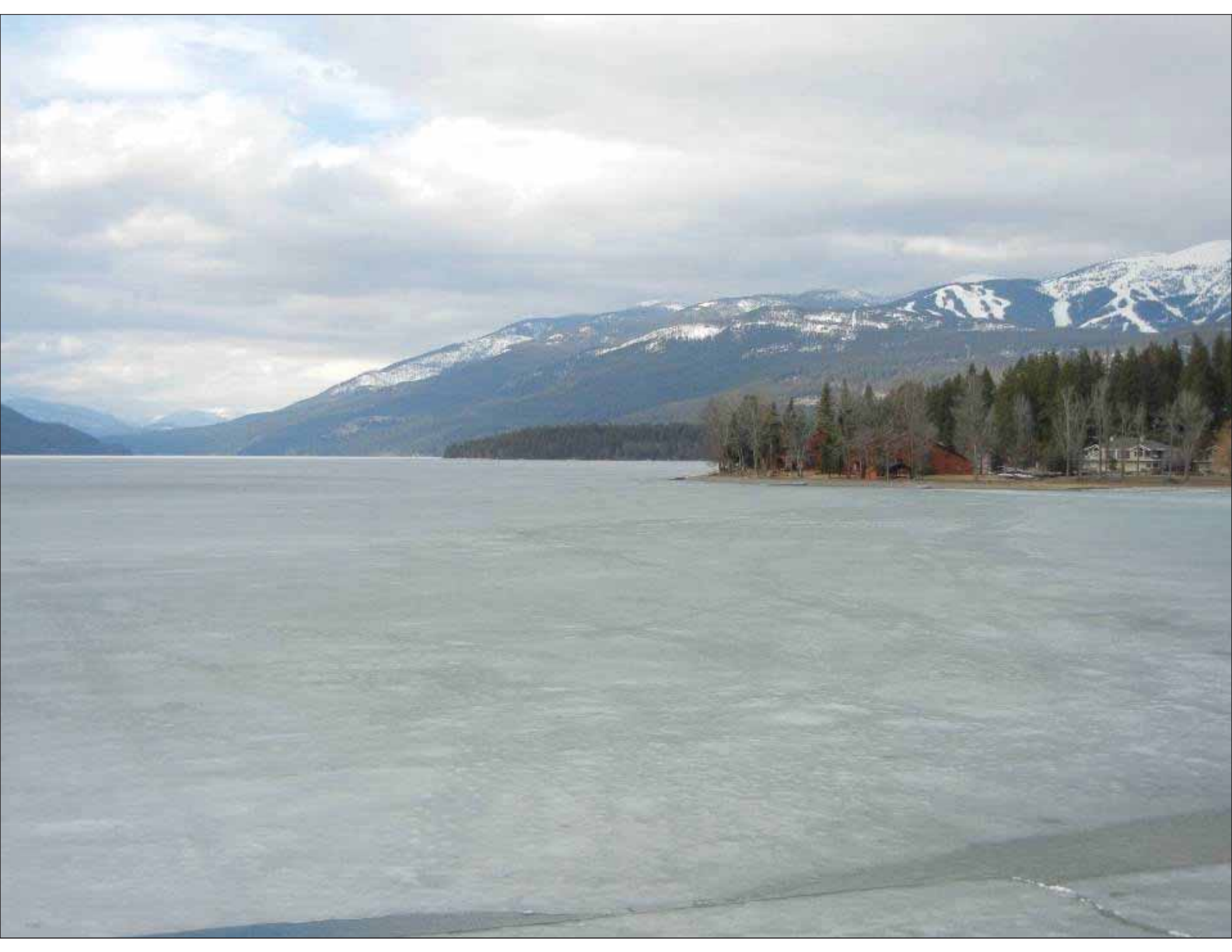


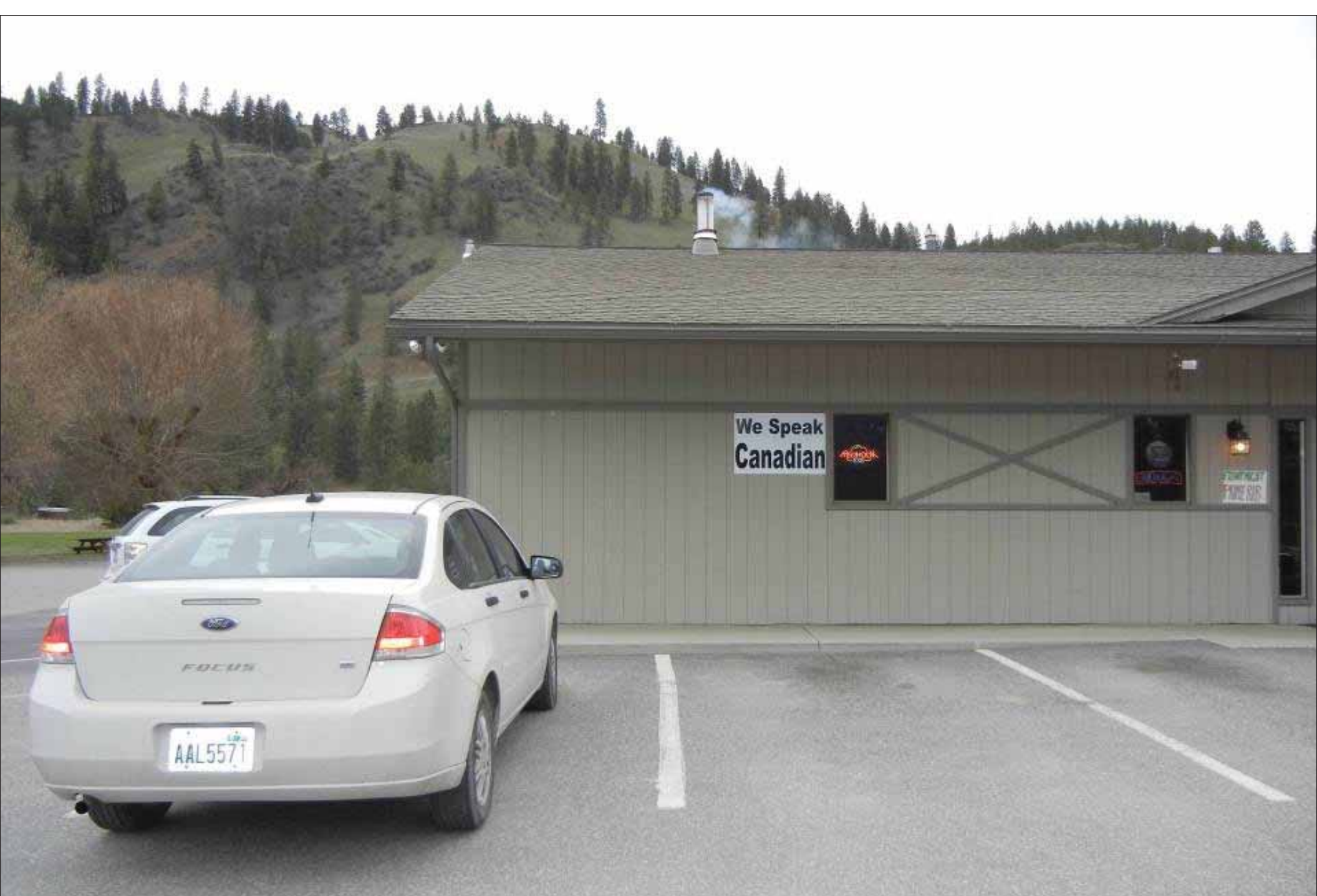
Three old friends (four counting the Duke) meeting for lunch in Cle Elum Washington. Steve Griswold, Matt Fonseca and Bob Eddings. All worked together at Plum Creek and shared time together measuring logs on the scaling ramp at the Bullfrog log yard.





Whitefish Lake; still with enough ice to drive a well insured vehicle across





Who says Americans don't make the effort to be bilingual. In fact, they had Kokanee on draught, a special on "twofers", and Shania Twain on the juke box



April 14 Start of the log scaling school. Russ Carrier, Russ Hogan and Boise Cascade deserve a lot of credit for putting on an excellent school



April 15 was the log roll-out with the much coveted hatchet awarded to the scaler that most closely matches the “school book” answer