



WASHINGTON STATE DEPARTMENT OF
Natural Resources

Peter Goldmark - Commissioner of Public Lands

Log Quality and Accountability for Log Sort Sales

Timber Measurements Society

Coeur d'Alene, ID

April 12, 2012

Dave Richards

Denise Roush-Livingston

Washington DNR,

Olympia, Washington



WASHINGTON STATE DEPARTMENT OF
Natural Resources

www.dnr.wa.gov

Washington DNR Trust Land Management

DNR manages more than 5.6 million acres of forest, range, agricultural, shorelines and commercial lands for the people of Washington State.

State trust lands provide more than \$200 million annually from sales and leases much of it going to support school construction, state institutions and county services.



DNR Timber Sales

In FY 2011 more than 590 mmbf of timber was sold generating more than \$200 million in gross revenue.

Timber may be sold as stumpage or log sort sales.

Stumpage sales are sold as lump sum or pay as removed.

Sort Sales sold as a “Delivered Log”.



Log Quality and Control

DNR Log Sort Sales

Sorts are for specific species, diameter and log quality characteristics.

Examples:

Douglas-fir sawlog 5" to 7" dib

Hemlock sawlog 8" + dib

Cedar Pole 35' and longer

Whitewood sawlog 12"+ dib

Hardwood Pulp



Purchaser Specifications

Purchaser identifies their preferred lengths and are guaranteed from 95% to 97% of delivered volume at preferred lengths.

Also guaranteed, a mis-sort less than 3% of delivered volume.

Poles are guaranteed to meet ANSI specs.

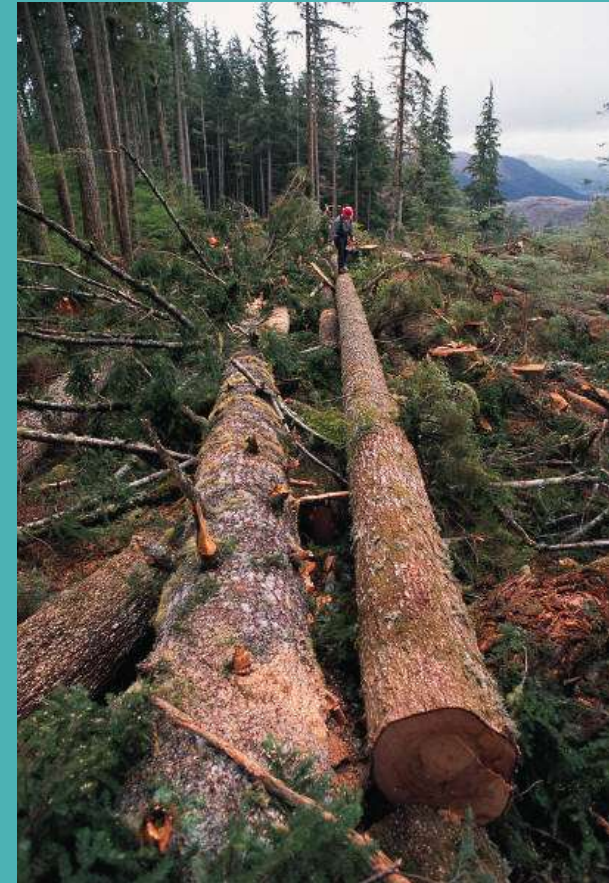


Contract Administrator

CA's responsibility to see that harvester produces sorts within these parameters.

Provides a cutting card to harvester with specs and instructs the harvester how to apply cutting specs.

Must assure that each purchaser has an adequate purchase security prior to log delivery.



Log Quality starts at the landing

Talk to the cutters, processor and loader operators.

Check lengths for adequate trim.

Talk to scalers at the yard.

Talk to purchaser's representative



Daily Information from CT3 reports

Vital for maintaining long term quality control.

CA needs information quickly to catch problems such as lengths and sorting.

View “Snapshots” of production information for each sort daily or for the life of the sale.



Log Accounting

CT3, Inc.

Current Technology.
Creative Thinking.
Commitment & Teamwork.



Log Management System

CT3 Log Management System is used by Washington State DNR to generate a full range of reports daily.

Harvesters are paid, bimonthly.

Purchasers are invoiced monthly.



WASHINGTON STATE DEPARTMENT OF
Natural Resources

www.dnr.wa.gov

Program established

2003 Program established and extended in 2007.

Revolving account was set up by legislature.

Current limit on contract harvest sales is 20% of the total statewide volume offered.

Gives DNR another mechanism for timber sales.



Log by log

All scale data is easily available.

The goal is to make reports very easy to read.

Accounting system allows for pricing log by log.

CA's can view information in a variety of formats.



Snapshot reports

Sort 4 DF 20"+ MBF

- ▶ Product recap
- ▶ Log sort recap

Product Recap	Logs	Grs BF	Net BF	% nbf	nbf/log
100% Scaled	2,242	1,782,750	1,667,220	100.0%	744
Totals	2,242	1,782,750	1,667,220	100.0%	744

Log Sort Recap	Logs	Grs BF	Net BF	% nbf	nbf/log
Sawlog	2,242	1,782,750	1,667,220	100.0%	744
Totals	2,242	1,782,750	1,667,220	100.0%	744



Snapshot reports

- **Sort 4 DF 20"+ MBF**
 - Species recap
 - Quality recap
 - Grade recap

Quality Recap	Logs	Grs BF	Net BF	% nbf	nbf/log
Qty. Ret.	22,00	21,740	15,920	0.0%	490

Grade Recap	Logs	Grs BF	Net BF	% nbf	nbf/log
1.0	1,000	1,000,000	1,000,000	100.0%	1,000

Species Recap	Logs	Grs BF	Net BF	% nbf	nbf/log
Douglas fir	2,242	1,782,750	1,667,220	100.0%	744
Totals	2,242	1,782,750	1,667,220	100.0%	744



Quality Reports

Parameters

Length distributions

Diameter distributions

Quality coding

Calculates percentage of volume out of specs

Length Distribution			
Category	Logs	Net BF	% nbf
12'	5	280	0.0%
14'	2	150	0.0%
* 16'	840	100,790	8.0%
18'	28	4,550	0.4%
* 20'	80	11,610	0.9%
21'	1	150	0.0%
22'	9	1,770	0.1%
* 24'	297	53,600	4.3%
* 26'	248	48,310	3.9%
27'	1	360	0.0%
28'	11	2,490	0.2%
30'	8	3,430	0.3%
31'	1	110	0.0%
* 32'	645	171,890	13.7%
33'	1	200	0.0%
34'	5	1,710	0.1%
36'	120	44,290	3.5%
37'	1	750	0.1%
38'	6	1,630	0.1%
* 40'	2,315	803,140	64.1%
42'	2	790	0.1%
43'	1	440	0.0%
45'	1	380	0.0%
47'	1	460	0.0%
(*) preferred	4,629	1,253,280	100.0%
Pref Lengths: 16', 20', 24', 26', 32', 40'			
MisManufactured			
Logs	Net BF	% nbf	
204	63,940	5.10%	



Efficiencies allowed for growth

Calculations automated

Net earnings report for monitoring finances

Actual data 24 hours later, quick turn around

Sort sales increasing for forest health reasons

Total Costs	Cost /NMBF	Earnings Amount	/NMBF
217,061.64	210	206,842.90	200
202,501.49	189	181,513.83	170
27,819.02	207	18,149.37	135
26,459.62	233	5,693.58	50
17,358.02	191	8,340.93	92
361,684.67	265	206,478.18	151
171,998.11	138	20,363.37	16
1,024,882.57	203	647,382.16	128



Forest Health Treatments (FIT)

The contract harvesting method was found to be in the best interest of the trust beneficiaries.

Capture revenue while providing additional environmental protection.

Low value sales can be monitored closely for net return.



Reports on SharePoint

The screenshot shows a web browser window displaying a SharePoint site. The address bar shows the URL: http://tsdc/Pacific%20Casc/32414/Contract%20Harvest%20reports%20streetsense_chrppts@dnrwbo08.dnr.wa.lcl/Forms/CT3.aspx. The page title is "Contract Harvest Reports (streetsense_chrppts@dnrwbo08.dnr.wa.lcl)". The page content shows a list of reports organized by creation date. The reports are listed in a table with columns for Type, Name, and Modified. The reports are grouped by creation date: 3/23/2012 (11 reports), 3/22/2012 (9 reports), and 3/21/2012 (9 reports). Each report name includes a file extension like ".new".

WASHINGTON STATE DEPARTMENT OF
Natural Resources
Caring for your natural resources ... now and forever

Timber Sales Document Center
This List: Contract Harvest Re

TSDC Home Page > Pacific Cascade > STREET SENSE SORTS > Contract Harvest Reports (streetsense_chrppts@dnrwbo08.dnr.wa.lcl)

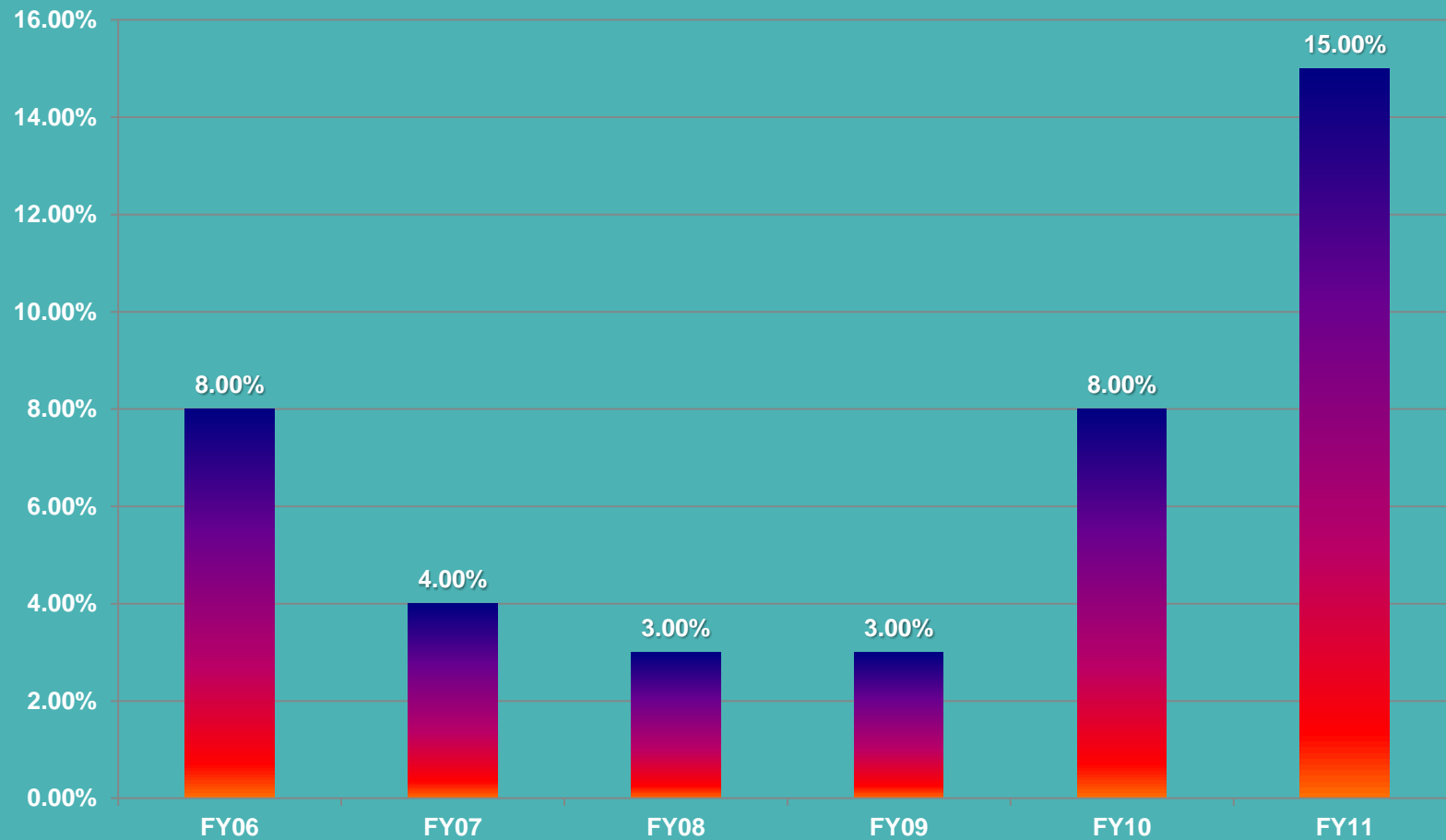
View: CT3

Type	Name	Modified
Created : 3/23/2012 (11)		
	CT3Audit_STREETS_14336 !new	3/23/2012 3:57 PM
	CT3Earnings_STREET_15030 !new	3/23/2012 3:58 PM
	CT3TickList_STREETS_16469 !new	3/23/2012 4:00 PM
	CT3WScale_STREETS_16671 !new	3/23/2012 4:00 PM
	CT3PBR_STREET__Daily_17542 !new	3/23/2012 4:01 PM
	CT3PBR_STREET__Todate_17645 !new	3/23/2012 4:01 PM
	CT3Cash_STREET_18296 !new	3/23/2012 4:02 PM
	CT3Snapshot_STREETS_SORT_2_DF_S_Daily_21506 !new	3/23/2012 4:08 PM
	CT3Snapshot_STREETS_SORT_2_DF_S_Todate_21608 !new	3/23/2012 4:08 PM
	CT3Snapshot_STREETS_SORT_6_DF_H_Daily_21711 !new	3/23/2012 4:08 PM
	CT3Snapshot_STREETS_SORT_6_DF_H_Todate_21817 !new	3/23/2012 4:08 PM
Created : 3/22/2012 (9)		
	CT3Audit_STREETS_3297 !new	3/22/2012 2:04 PM
	CT3TickList_STREETS_4104 !new	3/22/2012 2:05 PM
	CT3Earnings_STREET_4487 !new	3/22/2012 2:06 PM
	CT3Cash_STREET_5452 !new	3/22/2012 2:07 PM
	CT3PBR_STREET__Daily_6521 !new	3/22/2012 2:09 PM
	CT3PBR_STREET__Todate_6656 !new	3/22/2012 2:09 PM
	CT3WScale_STREETS_7303 !new	3/22/2012 2:10 PM
	CT3Snapshot_STREETS_SORT_6_DF_H_Daily_9834 !new	3/22/2012 2:14 PM
	CT3Snapshot_STREETS_SORT_6_DF_H_Todate_9942 !new	3/22/2012 2:15 PM
Created : 3/21/2012 (9)		



Contract harvest percentage

% of total sold volume sold as a sort sale



Where do we go from here?

Now index hauling cost to the price of fuel.

Now have a mechanism to index the price of logs/chips.

Program continues to evolve.



Questions ???

Contacts:

www.dnr.wa.gov

**Forest Resources and
Conservation Division**

Olympia, WA. 98504

Dave Richards

360-902-1365

Denise Roushe-Livingston

360-902-1675



WASHINGTON STATE DEPARTMENT OF
Natural Resources

www.dnr.wa.gov



WASHINGTON STATE DEPARTMENT OF
Natural Resources

Peter Goldmark - Commissioner of Public Lands